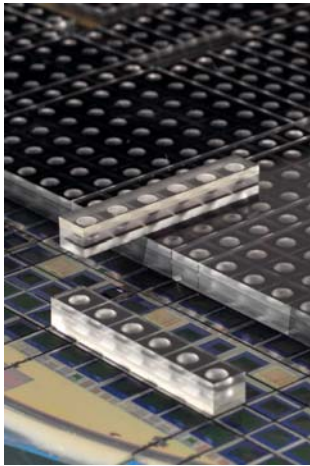


## Integrated Lens Stacks and Modules

### Customized:

- Multiple lens layer systems
- Wafer level packaging
- Integrated filters and diaphragms
- Mounting on image sensor



### Features:

- Small footprint down to below 1 x 1 mm<sup>2</sup>
- Pre-aligned lens system
- Multiple lens forms
- Tight back focal length control below 5 microns
- No focusing facilitating passive mounting
- Operating temperature – 40 to 125 °C
- Robust in hostile environments for application in e.g. automotive and industrial markets
- Up to 8 inch wafer processing

**FILL IN FORM**

<b>Optical properties</b>	<b>Typical requirements</b>	<b>Customer input</b>
Application	CIF, VGA, PVGA	
Module lay-out	1 – 5 positive and negative lenses	
Image sensor	Included / not included	
Transmission	Visible range	
Filter	IR	
F#	2.5	
MTF	70 – 85% @ 25lp/mm on axis	
Field of view	58 – 70°	
Distorsion	5 – 7%	
Relative illumination	50% on edge	
Spectral range		
Max field		
Image diagonal		
Chief ray angle		
<b>Mechanical properties</b>		
Height	3 – 11 mm	
Footprint	1 x 1 to 10 x 10 mm <sup>2</sup>	
Image size	2448x1793 μm <sup>2</sup> ,7580x4080 μm <sup>2</sup>	
Layer information	Diaphragm included	
Max length with sensor		
Max diameter		
<b>Operating requirements</b>		
Operating temperature	-40 to 125°C	
Storage temperature	-40 to 125°C	
Soldering requirements	reflow	

You can fax this form to + 31 40 25 61 503

**Anteryon B.V. • Eindhoven, The Netherlands**  
**Tel: +31 40 25 61 500 • Fax: +31 40 25 61 518**  
**www.anteryon.com • info@anteryon.com**